



East & West Express for International shipping



East & West Express for International shipping

Contents

About Us.....	3
Our services.....	4
Telephone and Telex codes.....	5
Currency Codes.....	6
World Time Zones.....	7
Forwarding Terminology.....	8
Continue FORWARDING TERMINOLOGY.....	9
Continue FORWARDING TERMINOLOGY.....	10
Phonographic Alphabet.....	11
Weight Conversion.....	12
Standard Containers.....	13
Open Top Containers.....	14
High Cube 40' Containers.....	15
Reefer Containers.....	16
Flat Rack Containers.....	17
Flat Rack Collapsible Containers.....	18
Platform Container.....	19
Contact us.....	20

East & West Express for International shipping

About Us

East & West Express is an energetic freight forwarder providing a wide range of professional Sea Freight services to worldwide destinations. With the sophisticated communications network among our affiliated agents in most major ports around the world, we provide the best quality service no matter if it is a single piece of cargo or a project movement of a complete production line.



A perfect combination of our experience plus accurate control of every sector, we deliver the shipment fast, reliable & most cost efficient. Being our customer, you just sit back & let us arrange for your group age, transshipment, customs clearance, door-to-door delivery and more at total ease.

East & West Express also handles OOG cargoes, loaded on special Equipments (Flat Racks & Open Top Containers) We are Specialist Sea freight forwarder, for Containerized

Cargo, our head office located at Damietta City, which Own Damietta seaport. East & West Express (We go beyond others, where no one can go).

We Mempership



Global Logistics Network, is an ISO 9001 Certified organization that encompasses leading independently owned and operated companies worldwide that specialize in the logistics industry-including freight forwarders, transportation intermediaries and associated companies - all working together in a network environment to benefit from our "Power of One" philosophy.



We have teamed up with a global network of partners giving the most state of the art and cost effective product and service solutions on the market today.



The INTERNATIONAL TRANSPORT JOURNAL Logistics Worldwide (ITJ) is the only trade journal worldwide which appears in three languages (German, French and English). It ensures the fortnightly transfer of current events and background reports to its international readership in the transport and logistics industry. In addition, subscribers receive the electronic newsletter «ITJ Daily», with the day's news and reports from all over the globe, every working day.

East & West Express for International shipping

Our Services

EAST & WEST EXPRESS FOR INT'L SHIPPING have knowledge, experience & operating objective to provide our clients to benefit from the best possible freighting and marine cargo shipping services.

your shipment too small for our mission



Ocean Freight is one of the key elements in multimodal transportation. In order to offer the best service possible, we have an ocean freight department specializing in both FCL/LCL and in the handling of different types of cargoes.

The flexibility and range of Ocean Services offered by **E&W Express** affords our customer economical alternatives to other more expensive modes of transportation. Our worldwide logistics services cover not only shipments from port to port, but also the complete door to door transportation chain from origin to final destination.



East & West Express Services

- * FCL/LCL import / export
- * Issuance and verification of documentation
- * Export and import customs clearance
- * Sea/Air shipments
- * Intermodal / multimodal transportation
- * Transport Insurance

For Sokhna port inquiries contact.

East & West Express for International shipping

Country	Tel./fax	Tx.	Country	Tel./fax	Tx.	Country	Tel./fax	Tx.
Afghanistan	x	79	Gibraltar	350	405	Nigeria	234	905
Albania	355	604	Great Britain	44	51	North Mariana Islands	670	760
Algeria	213	408	Greece	30	601	Norway	47	56
American Samoa	684	770	Greenland	299	503	Oman	968	498
Andorra	33	401	Grenada	*1473	395	Pakistan	92	82
Angola	244	991	Guadeloupe	590	299	Palestine	972	606
Antigua	*1268	393	Guam	671	700	Panama	507	379
Argentina	54	33	Guatemala	502	372	Papua New Guinea	675	703
Australia	61	71	Guinea Bissau	245	969	Paraguay	595	305
Austria	43	47	Guinea Rep. of	224	995	Peru	51	36
Azerbaijan	7	784	Guyana	592	995	Philippines	63	75
Azores Islands	351	404	Haiti	509	203	Poland	48	63
Bahama Islands	*1242	297	Honduras	504	374	Portugal	351	404
Bahrain	973	490	Hong Kong	852	802	Puerto Rico	*1787	207
Bangladesh	880	780	Hungary	36	61	Qatar	974	497
Barbados	*1246	392	Iceland	354	501	Reunion	262	961
Belarus	7	681	India	91	81	Romania	40	65
Belgium	32	46	Indonesia	62	73	Russia	7	64
Belize	501	371	Iran	98	88	Rwanda	250	909
Benin	229	972	Iraq	964	491	SanMarino	39	505
Bermuda	*1441	290	Ireland	353	500	Sao Thome	239	967
Bolivia	591	307	Israel	972	606	Saudi Arabia	966	495
Bosnia-Hercegovina	387	600	Italy	39	43	Senegal	221	906
Botswana	267	962	Ivory Coast	225	983	Seychelles	248	965
Brazil	55	38	Jamaica	*1876	291	Sierra Leone	232	998
Brunei	673	809	Japan	81	72	Singapore	65	87
Bulgaria	359	67	Jordan	962	493	Slovak Rep.	42	66
Burkina Faso	226	978	Kazakhstan	7	785	Slovenia	386	598
Burma	95	83	Kenya	254	987	Solomon Islands	677	778
Burundi	257	903	Kirgistan	7	788	Somalia	262	900
Cambodia	855	807	Kiribati	686	761	South Africa	27	95
Cameroon	237	970	Korea (North)	850	899	Spain	34	52
Canada	1	21	Korea (South)	82	801	Spanish Territory in North Africa	34	56
Canary Islands	34	52	Kuwait	965	496	Sri Lanka(Ceylon)	94	803
Cape Verde Islands	238	993	Laos	856	804	St. Kitts	*1869	397
Cayman Islands	*1345	293	Latvia	371	538	St. Lucia	*1758	397
Central African Rep.	x	971	Lebanon	961	494	St. Vincent	*1784	399
Chad	235	976	Lesotho	266	963	Sudan	249	984
Chile	56	34	Liberia	231	997	Surinam	597	304
China	86	85	Libya	218	901	Swaziland	268	964
Colombia	57	35	Liechtenstein	41	45	Sweden	46	54
Congo Democratic Rep.	243	982	Lithuania	370	539	Switzerland	41	45
Congo of Brazzaville	242	981	Luxemburg	352	402	Syria	963	492
Cook Islands	682	772	Macao	853	808	Taiwan(Formosa)	886	785
Costa Rica	506	376	Macedonia	389	597	Tanzania	255	989
Croatia	385	599	Madeira Islands	351	404	Thailand	66	86
Cuba	53	28	Malagasy	261	986	Togo	228	977
Cyprus	357	605	Malawi	265	904	Tonga	676	777
Czech Rep	42	66	Malaysia	60	84	Trinidad and Tobago	*1868	294
Denmark	45	55	Maldives Islands	960	896	Tunisia	216	409
Djibouti	253	979	Mali Rep	223	985	Turkey	90	607
Dominica	*1767	394	Malta	356	406	Turkmenistan	993	789
Dominican Rep.	*1809	202	Marshall Islands	692	765	Uganda	256	988
Ecuador	593	308	Martinique	596	298	Ukraine	380	680
Egypt	20	91	Mauritania	222	974	United Arab Emirates	971	893
El Salvador	503	373	Mauritius	230	966	Uruguay	598	32
Equatorial Guinea	x	999	Mexico	52	22	USA	1	23
Eritrea	291	980	Monaco	377	42		1	25
Estonia	372	537	Mongolia	976	800		1	25
Ethiopia	251	980	Montserrat	*1664	396	Usbekistan	998	786
Falkland Islands	500	306	Morocco	212	407	Vanuatu	678	771
Faroe Islands	298	55	Mozambique	258	992	Venezuela	58	31
Fiji Islands	679	701	Myanmar	95	83	Vietnam	84	805
Finland	358	57	Namibia	264	908	Virgin Islands (U.S.)	*1340	208
France	33	42	Nauru	674	775	Virgine Islands (U.K.)	*1284	292
French Guiana	594	300	Nepal	977	891	Western Samoa	685	779
French Polynesia	689	702	Netherlands	31	44	Yemen	967	895
Gabon	241	973	Netherlands Antilles	599	390	Yemen	967	806
Gambia	220	996	New Caledonia	687	706	Yugoslavia	381	62
Georgia	995	683	New Zealand	64	74	Zambia	260	902
Germany	49	41	Nicaragua	505	375	Zimbabwe	263	907
Ghana	233	94	Niger	227	975			

X No direct dialing from abroad

* If you call from USA, delete 1 in country code

East & West Express for International shipping

CURRENCY CODES

The table below gives the name of the currency unit and its official code for the countries listed. The three-letter codes indicated are internationally agreed and published by ISO. Please note that other variations such as symbols (\$ = dollar, £ = pound) and two letter codes (e.g. DM = German mark, Kr = Krona) may be in use locally

Country	Currency	Code	Country	Currency	Code	Country	Currency	Code
Afghanistan	Afghani	AFA	Grenada	E Car \$	XCD	Philippines	Peso	PHP
Albania	Lek	ALL	Guadelupe	Fr. Franc	FRF	Pitcarn Islands	N Z \$	NZD
Algeria	Dinar	DZD	Guam	USD	USD	Poland	Zloty	PLN
Andorra	Sp. Ptas	AOP	Guatemala	Quetzal	GTQ	Portugal	Euro	EUR
Angola	New Kwanza	AON	Guinea	Franc	GNF	Puerto Rico	US \$	USD
Antigua	E. Car \$	XCD	Guinea Bissau	Cfa Franc	XAF			
Argentina	Peso	ARS	Guyana	Dollar	GYP	Qatar	Riyal	QAR
Armenia	Rouble	RUB						
Aruba	Florin	AWG	Haiti	Goude	HTG	Reunion Isle De La	Fr Franc	FRF
Australia	Aus \$	AUD	Honduras	Lempira	HNL	Romania	Leu	ROL
Austria	Euro	EUR	Hongkong	HKG \$	HKD	Russia	Rouble	RUB
Azerbaijan	Manat	AZM	Hungary	Forint	HUF	Rwanda	Franc	RWF
Azores	Port Esc	PTE						
			Iceland	Krone	ISK	St.Christopher	E Car \$	XCD
Bahamas	Baham \$	BSD	India	Rupee	INR	St. Helena	£	SHP
Bahrain	Dinar	BHD	Indonesia	Ruphia	IDR	St. Lucia	E Car \$	XCD
Balearic Islands	Sp. Ptas	ESP	Iran Official	Rial	IRR	St. Pierre	Fr Franc	FRF
Bangladesh	Taka	BDT	Iraq	Dinar	IQD	St. Vincent	E Car \$	XCD
Barbados	Barb. \$	BBD	Ireland	Euro	EUR	Samoa American	US \$	USD
Belarus	Belarussian	BYB	Israel	Shekel	ILS	Samoa Western	Tala	WST
Belgium	Euro	EUR	Italy	Euro	EUR	San Marino	It. Lira	ITL
Belize	Bel \$	BZD	Ivory Cost	Cfa Franc	XAF	Sao Tome & Princip Dr	Dobra	STD
Benin	Cfa Franc	XOF				Saudi Arabia	Rial	SAR
Bermunda	Ber \$	BMD	Jamaica	Jam \$	JMD	Senegal	Cfa Franc	XOF
Bhutan	Ngultrun	BTN	Japan	Yen	JPY	Seychelles	Rupee	SCR
Bolivia	Boliviano	BOB	Jordan	Dinar	JOD			
Bolivia	Fin	BOV				Sierra Leone	Leone	SLL
Botswana	Pula	BWP	Kazakhstan	Tenga	KZT	Singapore	Sing \$	SGD
Brazil	Real	BRL	Kenya	Shilling	KES	Slovakia	Koruna	SKK
Brunei	Brun \$	BND	Kiribati	Aus \$	AUD	Slovenia	Tolar	SIT
Bulgaria	Lev	BGL	Korea North	Won	KPW	Solomon Islands	Dollar	SBD
Burkino Faso	Cfa France	XOF	Korea South	Won	KRW	Somali rep	Shilling	SOS
Burundi	Bur France	BIF	Kuwait	Dinar	KWD	South Africa	Rand	ZAR
						Spain	Euro	EUR
Cambodia	Riel	KHR	Laos	New Kip	LAK	Spanish Ports in N Afr	Sp Ptas	ESP
Cameroon	Cfa Franc	XAF	Latvia	Lat	LVL	Sri Lanka	Rupee	LKR
Canada	Dollar	CAD	Lebanon	Leb £	LBP	Sudan Rep	£	SDP
Canary Islands	Sp Ptas	ESP	Lesotho	Loti	LSL	Sudan	Dinar	SDD
Cape Verde Islands	Cap V Esc	CVE	Liberia	Lib \$	LRD	Surinam	Guilder	SRG
Cayman Islands	Caym \$	KYD	Libya	Dinar	LYD	Sweden	Krona	SEK
Cent. Afr. Rep.	Cfa Franc	XAF	Lichtenstein	Swiss Fr	CHF	Switzerland	Franc	CHF
Chad	Cfa Franc	XAF	Lithuania	Litas	LTL	Swaziland	Lilangeni	SZL
Chile	Peso	CLP	Luxembourg	Euro	EUR	Syria	Syria £	SYP
China	Yuan	CNY						
Colombia	Peso	COP	Macao	Pataca	MOP	Taiwan	Taiwan \$	TWD
Comoro Islands	Cfa Franc	XMF	Madagascar	Franc	MGF	Tanzania	Shilling	TZS
Congo of Brazzav.	Cfa Franc	XAF	Madeira	Port Esc	PTE	Thailand	Baht	THB
Congo Dem. Rep.	Zaire	ZRZ	Malawi	Kwacha	MWK	Togo Rep.	Cfa Franc	XOF
Costa Rica	Colon	CRC	Malaysia	Ringitt	MYR	Tonga Islands	Palanga	TOP
Croatia	Kuna	HRK	Maldives Islands	Rufiyaa	MVR	Trinidad & Tobago	TT \$	TTD
Cuba	Peso	CUP	Mali Rep.	Cfa Franc	XAF	Tunisia	Dinar	TND
Cyprus	Euro	EUR	Malta	Euro	EUR	Turkey	Lira	TRL
Czech Rep.	Koruna	CZK	Martinique	Local Fr	FRF	Turks & Caicos Islands	US \$	USD
			Mauritania	Ouguiya	MRO	Tuvalu	Aus \$	AUD
Djibouti	Dji Franc	DJF	Mauritius	Rupee	MUR			
Denmark	Krone	DKK	Mexico	New Peso	MXN	Uganda	Shilling	UGX
Dominica	E Car \$	XCD	Miquelon	Local Fr	FRF	Ukraine	Hryvna	UAH
Dominican Rep.	Peso	DOP	Moldova	Leu	MDL	United Arab Emirates	Dirham	AED
			Monaco	Fr Franc	FRF	United Kingdom	Pound	GBP
Equador	Sucre	ECS	Mongolia	Tugrik	MNT	Uruguay	Peso	UYU
Egypt	Egy £	EGP	Montserrat	E. Car \$	XCD	USA	Dollar	USD
El Salvador	Colon	SVC	Morocco	Dirham	MAD	Uzbekistan	Som	UZS
Equatorial Guinea	Cfa Franc	XAF	Mozambique	Metical	MZM			
Estonia	Kroon	EEK	Myanmar	Kyat	MMK			
Ethiopia	Birr	ETB	Namibia	Namibia \$	NAD	Vanuatu	Vatu	VUV
Europe	Euro	EUR	Nauru Islands	Aus \$	AUD	Vatican	Lira	ITL
			Nepal	Rupee	NPR	Venezuela	Bolivar	VEB
Falkland Islands	Falkl £	FKP	Netherlands	Euro	EUR	Vietnam	Dong	VND
Faeroeyene	Dan Kron	DKK	Netherlands Antilles	Ant Guild	ANG	Virgin Islands Am	US \$	USD
Fiji	Fiji \$	FJD	New Zealand	NZ \$	NZD	Virgin Islands British	US \$	USD
Finland	Euro	EUR	Nicaragua	Cordoba	NIO			
France	Euro	EUR	Niger Rep	Cfa Franc	XOF			
French C'in Africa	Cfa Franc	XAF	Nigeria	Naira	NGN	Western Samoa	Tala	WST
French Guinea	Fr Franc	FRF	Norway	Krone	NOK			
French Pacific Island	Cfa Franc	XPF				Yemen	Rial	YER
Gaboon	Cfa Franc	XAF	Oman	Rial	OMR	Yugoslavia	Dinar	YUG
Gambia	Dalasi	GMD						
Germany	Euro	EUR	Pakistan	Rupee	PKR	Zaire Rep.	New Zaire	ZR
Ghana	Cedi	GHC	Panama	Balboa	PAB	Zambia	Kwacha	ZMK
Gibraltar	Gib £	GIP	Papua New Guinea	Kina	PGK	Zimbabwe	Zimbabwe \$	ZWD
Greenland	Dan Kroon	DKK	Paraguay	Guarini	PYG			
Greece	Euro	EUR	Peru	New Sol	PEN			

East & West Express for International shipping

TIME ZONES

Summertime (daylight saving time) occur in some countries.

Country	Time	Country	Time	Country	Time
AFGHANISTAN	+41/2	GHANA	GMT	PARAGUAY	-4
ALBANIA	+1	GIBRALTAR	+1	PERU	-5
ALGERIA	+1	GEECE	+2	PHILIPPINES	+8
ANGOLA	+1	GREENLAND	-3	POLAND	+1
ARGENTINA	-3	GUATEMALA	-6	PORTUGAL	GMT
AUSTRALIA:		GUINEA	GMT	PUERTO RICO	GMT
NSW, Queensland,		GUINEA-BISSAU	-1		
Tasmania, Victoria	+10	GUYANA	-3	QATAR	+3
South Australia					
Northern Territory	+91/2	HAITI	-5	REUNION	+4
West Australia	+8	HONDURAS	-6	ROMANIA	+2
AUSTRIA	+1	HONG KONG	+8	RUSSIA:	
		HUNGARY	+1	Moscow	+3
BAHAMAS	-5			St.Petersburg	+3
BAHRAIN	+3	ICELAND	GMT	Vladivostok	+10
BANGLADESH	+6	INDIA	+51/2	RWANDA	+2
BELGIUM	+1	IRAN	+31/2		
BELIZE	-6	IRAQ	+3	ST LUCIA	-2
BERMUDA	-4	IRELAND	GMT	SAIPAN	+10
BOLIVIA	-4	ISRAEL	+2	SAMOA	-11
BOTSWANA	+2	ITALY	+1	SAUDI ARABIA	+3
BRAZIL:		IVORY COAST	GMT	SENEGAL	GMT
Acre	-5			SEYCHELLES	+4
West	-4	JAMAICA	-5	SIERRA LEONE	GMT
East	-3	JAPAN	+9	SINGAPORE	+8
BRUNEI	+8	JORDAN	+2	SLOVAC REPUBLIC	+1
BULGARIA	+2			SOLOMON ISLANDS	+11
BURKINA FASO	GMT	KENYA	+3	SOUTH AFRICA	+2
BURMA	+61/2	KIRIBATI	+12	SOMALIA	+3
BURUNDI	+2	KOREA	+9	SPAIN	+1
		KUWAIT	+3	SRI LANKA	+51/2
CAMEROON	+1			SUDAN	+2
CANADA:		LAOS	+7	SURINAM	-31/2
Newfoundland	-31/2	LATVIA	+2	SWAZILAND	+2
Atlantic	-4	LEBANON	+2	SWEDEN	+1
Eastern	-5	LIBERIA	GMT	SWITZERLAND	+1
Central	-6	LIBYA	+2	SYRIA	+2
Mountain	-7	LITHUANIA	+2		
Pacific	-8	LUXEMBOURG	+1	TAHITI	-10
Dawson City	-9			TAIWAN	+8
CANARY IS	+1	MACAU	+8	TANZANIA	+3
CENTRAL AFRICAN REPUBLIC	+1	MADAGASKAR	+3	THAILAND	+7
CHAD	+1	MALAWI	+2	TOGO	GMT
CHILE	-4	MALAYSIA	+8	TRINIDAD & TOBAGO	-4
CHINA	+8	MALDIVES	+5	TUNISIA	+1
COLOMBIA	-5	MALI	GMT	TURKEY	+3
CONGO	GMT	MALTA	+1	TURKS & CAICOS	-5
CONGO OF BRAZZAVILLE	+1	MARTINIQUE	-4		
COSTA RICA	-6	MAURITANIA	GMT	UAE	+4
CUBA	-5	MAURITIUS	+4	UGANDA	+3
CYPRUS	+2	MEXICO	-6	UK	GMT
CZECH REPUBLIC	+1	MONGOLIA	+8	URUGUAY	-3
		MONTSERRAT	-4	USA:	
DENMARK	+1	MOROCCO	GMT	Eastern	-5
DJIBOUTI	+3	MOZAMBIQUE	+2	Central	-6
DOMINICAN REPUBLIC	-4			Pacific	-8
		NAMIBIA	+2	Alaska-East	-8
ECUADOR	-5	NAURU	+12	Alaska-West	-11
EGYPT	+2	NEPAL	+51/2	Hawaii	-10
EL SALVADOR	-6	NETHERLANDS	+1		
EQUATORIAL GUINEA	GMT	NEW CALEDONIA	+11	VANUATU	+11
ESTONIA	+2	NEW ZEALAND	+12	VENEZUELA	-4
ETHIOPIA	+3	NIGER	GMT	VIETNAM	+7
		NIGERIA	+1		
FIJI	+12	NORWAY	+1	YEMEN	+3
FINLAND	+2			YUGOSLAVIA	+1
FRANCE	+1	OMAN	+4		
				ZAMBIA	+2
GABON	+1	PAKISTAN	+5	ZIMBABWE	+2
GAMBIA	GMT	PANAMA	-5		
GERMANY	+1	PAPUA NEW GUINEA	+10		

East & West Express for International shipping

FORWARDING TERMINOLOGY

Ad Hoc Charter

A one-off charter operated at the whim of airline or charterer.

Air Waybill

Contact documents between shipper and carrier setting down conditions of carriage of goods.

Belly Cargo

Freight carried in the hold below the main (passenger) deck.

Belly Hold

Freight accommodation below the main deck.

Bermuda Agreement

An agreement concluded in 1946 between the UK and the US, designed to regulate future international air traffic. Most governments accept its principles and follow it inter alia by limiting traffic rights on international routes to one or two carriers.

Bilateral Rights

Agreements on traffic rights concluded between two governments.

Bloodstock

Pedigree Livestock. Often race horses or cattle for breeding.

Breakpoint

Weight at which freight charges change eg 100 kilos.

Cabotage

Where cargo is carried on what is essentially a domestic flight and therefore not subject to international agreements that fix set rates. Cabotage rates are negotiable between shipper and airline and apply on flights within a country and to its overseas territories.

Chargeable kilo

Rate for goods where volume exceeds six cubic metres to the tonne.

Charter

Originally meant a flight where a shipper contracted hire of an aircraft from an airline. Has usually come to mean any non-scheduled commercial service.

CIF

Cost, Insurance and Freight, Term used to describe shipment for which costs have been prepaid by exporter (Consignor.)

Class Rates

Tariffs applied to cargo of a designated class for a stated area or route. Usually expressed as a discount or premium over GCR.

Combi

An aircraft with pallet or container capacity on its main deck as well as in its belly holds.

Consolidator

An agent which brings together a number of shipments for one destination to qualify for preferential airline rates.

Contract Rate

A charge levied by carriers selling capacity forward over a given route to a shipper or forwarder; the client is therefore assured of capacity, which must be paid for regardless of load carried.

DCA

Dept of Civil Aviation. Commonly used term to denote the government department of any foreign country that is responsible for aviation regulation and granting traffic rights.

Dead Leg

A sector flown without payload.

Dry Lease

The rental of a "clean" aircraft without crew, ground staff or supporting equipment.

Empty Leg

Results from an aircraft primarily chartered outbound having cargo capacity inbound or vice versa. A cheap form of airfreight.

FAK

Freight All Kinds - uniform airline charge scale applying to a number of commodities; as opposed to SCR (Specific Commodity Rate) applying to one commodity only.

East & West Express for International shipping

Continue FORWARDING TERMINOLOGY

Fifth Freedom Flight

Where cargo is carried by an airline between two countries in neither of which it is based.

Flag Carrier

An airline of one national registry whose government gives it partial or total monopoly over international routes.

Fourth Freedom Flight

Where cargo is carried by an airline from a foreign country to the country in which it is based.

Gateway

Port of entry into a country or region.

GCR

General Cargo Rate. The basic tariff category which was introduced to cover most air cargo; now covers only a minority, the remainder being under SCR or class rates.

GSA

General Sales Agent acting on behalf of an airline. Usually Broker or Forwarder.

House Air Waybill (HAWB)

Document covering conditions of goods transported in a forwarder's consolidation.

Igloo

Container designed to occupy full main deck width of carrying aircraft.

Integrated Carrier

Forwarder which uses own aircraft, whether owned or leased, rather than scheduled airlines.

Interline

Mutual agreement between airlines to link their route network.

Livestock

Common farm animals.

Load Factor

Capacity sold as against capacity available, expressed as a percentage.

National Carrier

A flag carrier owned or controlled by the state.

No Objection Certificate

Document provided by scheduled or national airlines of many countries declaring no objection to a proposed charter flight operated by another airline. Often demanded by government authorities before they grant permission for a charter flight to take place.

No Objection Fee

Sum of money paid by a charter airline normally to a scheduled airline in order that it waives its right of objection to its government, thus allowing a charter to take place. Tantamount to a bribe. The amount is usually a fixed percentage of the gross cost of a charter. Common practice in the Middle East and Africa.

Off-line

Describes an airline that sells in a market to which it does not operate. An Off-Line carrier will use another operator to link with its network.

Pallet

Load carrying platform to which loose cargo is secured before placing aboard the aircraft.

Pallet Extender

Fashionable metal or cardboard device to increase pallet capacity.

Part Charter

Where part of an airline scheduled flight is sold as if it were a charter in its own right. (Often wrongly used as a synonym for split charter).

Part Load Charter

Where a part of an aircraft's load is discharged at one destination and a part of it at another. This is distinct from a split charter where a number of consignments are carried to the same destination. Inbound, part loads are treated as single entity charters under the regulations of most countries.

Perishables

Any cargo that loses considerable value if it is delayed in transportation. (Usually refer to fresh fruit and vegetables).

East & West Express for International shipping

Continue FORWARDING TERMINOLOGY

Pivot Weight

That weight of a ULD above which a higher tariff applies; in effect an incentive to maximise cargo density.

Proof of Delivery

Add-on service in express market, delivered either by phone or courier. Often offered free.

Route

An established air passage, from point of departure to terminating station.

Royalty

A charge on charter flights levied by some governments before traffic rights are granted. Sometimes called a "no objection fee". Usually a fixed proportion of total charter value.

Scheduled Flight

Any service that operates to a set timetable.

SCR

Specific Commodity Rate. Applied to narrowly specified commodities. Usually granted on relatively large shipments. Theoretically is of limited time duration.

Sector

Distance between two ground points within a route.

Shipper

Term used to describe exporter. Mostly manufacturing companies.

Single Entity Charter

A non-scheduled flight carrying the cargo of one shipper.

Split Charter

Where a number of consignments from different shippers are carried on the same non-scheduled aircraft. Under UK regulations a non-scheduled flight chartered by a single forwarder or agent on behalf of a number of shippers is still classified as a split charter. Under US regulations, a forwarding chartered flight is classified as a single entity although it can consolidate.

Third Freedom Flight

Where cargo is carried by an airline, from the country in which it is based, to a foreign country.

Traffic Conferences

Rating-fixing machinery operated by IATA.

Traffic Rights

Government controls on the type and frequency of commercial flights into or out of its territory. See Freedoms of the Air.

Ton-Kilometre

Measure of airline freight capacity.

Transshipment

Freight that switches aircraft before final destination, often to take advantage of cheaper rates.

Transport Index

The number expressing the maximum radiation level in a package of ULD.

ULD

Unit Load Device. Pallet or Container for freight.

Unitisation

The packing of single or multiple consignments into ULDs of pallets.

Universal Postal Union

Organisation which negotiates international mail charges.

Weight Load Factor

Payload achieved as against available, expressed as a percentage. Cargo is frequently limited by volume rather than weight; hence weight load factors of 100% are rarely achieved.

Wet Lease

An arrangement for renting an aircraft under which the owner provides crews; ground support equipment, fuel and so on (of dry lease).

Yield

Revenue, not necessarily profitable, per unit of traffic.

East & West Express for International shipping

PHONOGRAPHIC ALPHABET

ALFA
BRAVO
CHARLY
DELTA
ECHO
FOXTROT
GOLF
HOTEL
INDIA

JULIETT
KILO
LIMA
MIKE
NOVEMBER
OSKAR
PAPA
QUEBEC
ROMEO

SIERRA
TANGO
UNIFORM
VICTOR
WHISKY
XEROX
YANKEE
ZULU

East & West Express for International shipping

WEIGHT CONVERSION TABLE

LB/KG - KG/LB 1 POUND (LB) = 0.45359 KILOS, 1 KILO (KG) = 2.20462 POUNDS

Kilos	Pounds	Kilos	Pounds	Pounds	Kilos	Pounds	Kilos
1	2-205	61	134-482	1	0-454	61	27-669
2	4-409	62	136-686	2	0-907	62	28-123
3	6-614	63	138-891	3	1-361	63	28-576
4	8-818	64	141-096	4	1-814	64	29-030
5	11-023	65	143-300	5	2-268	65	29-483
6	13-228	66	145-505	6	2-722	66	29-937
7	15-432	67	147-710	7	3-175	67	30-391
8	17-637	68	149-914	8	3-629	68	30-844
9	19-842	69	152-119	9	4-082	69	31-298
10	22-046	70	154-323	10	4-536	70	31-751
11	24-251	71	156-528	11	4-990	71	32-205
12	26-455	72	158-733	12	5-443	72	32-658
13	28-660	73	160-937	13	5-897	73	33-112
14	30-865	74	163-142	14	6-350	74	33-566
15	33-069	75	165-347	15	6-804	75	34-019
16	35-274	76	167-551	16	7-257	76	34-472
17	37-479	77	169-756	17	7-711	77	34-926
18	39-683	78	171-960	18	8-165	78	35-380
19	41-888	79	174-165	19	8-618	79	35-834
20	44-092	80	176-370	20	9-072	80	36-287
21	46-297	81	178-574	21	9-525	81	37-741
22	48-502	82	180-779	22	9-979	82	37-194
23	50-706	83	182-983	23	10-433	83	37-648
24	52-991	84	185-188	24	10-886	84	38-102
25	55-116	85	187-393	25	11-340	85	38-555
26	57-320	86	189-597	26	11-793	86	39-009
27	59-525	87	191-802	27	12-247	87	39-462
28	61-729	88	194-007	28	12-701	88	39-916
29	63-934	89	196-211	29	13-154	89	40-370
30	66-139	90	198-416	30	13-608	90	40-823
Kilos	Pounds	Kilos	Pounds	Pounds	Kilos	Pounds	Kilos
31	68-343	91	200-620	31	14-061	91	41-277
32	70-548	92	202-825	32	14-515	92	41-730
33	72-752	93	205-030	33	14-968	93	42-184
34	74-957	94	207-234	34	15-422	94	42-637
35	77-162	95	209-439	35	15-876	95	43-091
36	79-336	96	211-644	36	16-329	96	43-545
37	81-571	97	213-848	37	16-783	97	43-988
38	83-776	98	216-053	38	17-236	98	44-452
39	85-980	99	218-257	39	17-690	99	44-905
40	88-185	100	220-462	40	18-144	100	45-359
41	90-389	125	275-278	41	18-597	125	56-699
42	92-594	150	330-693	42	19-051	150	68-039
43	94-799	175	385-809	43	19-504	175	79-378
44	97-003	200	440-924	44	19-958	200	90-718
45	99-208	225	496-040	45	20-412	225	102-058
46	101-413	250	551-155	46	20-865	250	113-398
47	103-617	275	606-271	47	21-319	275	124-737
48	105-822	300	661-386	48	21-772	300	136-077
49	108-026	325	716-502	49	22-226	325	147-417
50	110-231	350	771-617	50	22-680	350	158-757
51	112-436	375	826-733	51	23-133	375	170-096
52	114-640	400	881-848	52	23-587	400	181-436
53	116-845	425	936-964	53	24-040	425	192-776
54	119-049	450	992-079	54	24-494	450	204-116
55	121-254	475	1 047-195	55	24-947	475	215-455
56	123-459	500	1 102-310	56	25-401	500	226-795
57	125-663	1 000	2 204-620	57	25-855	1 000	453-590
58	127-868	2 000	4 409-245	58	26-308	2 000	907-194
59	130-073	3 000	6 613-867	59	26-762	3 000	1 360-791
60	132-277	5 000	11 023-112	60	27-215	5 000	2 267-985

East & West Express for International shipping

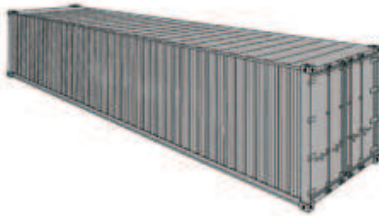
CONTAINER DETAILS: STANDERD GLOBAL CONTAINERS

20' GENERAL PURPOSE / DRY VAN



		Millimeters	Feet
Internal Dimensions	Length	5'900	19'4"
	Width	2'350	7'8"
	Height	2'390	7'10"
Door Opening	Width	2'340	7'8"
	Height	2'280	7'6"
		Kilograms	Lbs
Weight	Max. Payload	21'800	48'060
	Container-Tare	2'200	4'850
	Max. Gross Wt.	24'000	52'910
		Cube Metres	Cube Feet
Volume Capacity	Max. Payload	33,2	1173

40' GENERAL PURPOSE / DRY VAN



Suitable for commodities in boxes, cartons, bundles, drums, smaller cases, furnitures, pallets, etc.

		Millimeters	Feet
Internal Dimensions	Length	12'033	39'6"
	Width	2'350	7'8"
	Height	2'390	7'10"
Door Opening	Width	2'340	7'8"
	Height	2'280	7'6"
		Kilograms	Lbs
Weight	Max. Payload	26'680	58'820
	Container-Tare	3'800	8'380
	Max. Gross Wt.	30'480	67'200
		Cube Metres	Cube Feet
Volume Capacity	Max. Payload	67,6	2'387

Internal dimensions and weights are based on shipping line's and manufacturer's specifications. Tolerances must always be taken into account by shipper. Above mentioned details are to be considered as a guideline only.

Weight restrictions may be considered throughout the whole transport leg. National rules and regulations for road and rail transport, capacity limitations of cranes in seaport and inland-terminals as well as other factors may overrule the possible payload of a container.

For precise case-by-case information consult your local Freight Forwarder, Packaging Specialist or the specific shipping line you are going to book with.

East & West Express for International shipping

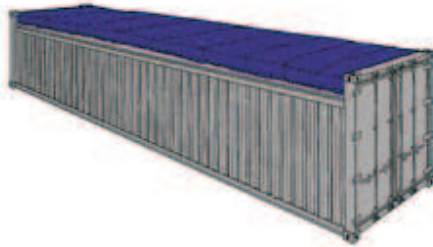
CONTAINER DETAILS: OPEN TOP CONTAINERS DETAILS

20' OPEN TOP



		Millimeters	Feet
Internal Dimensions	Length	5'895	19'4"
	Width	2'344	7'8"
	Height	2'347	7'8"
Door Opening	Width	2'336	7'8"
	Height	2'160	7'1"
Roof Opening	Width	5'335	17'6"
	Height	1'900	6'2"
		Kilograms	Lbs
Weight	Max. Payload	28'130	62'020
	Container-Tare	2'350	5'180
	Max. Gross Wt.	30'480	67'200
		Cube Metres	Cube Feet
Volume Capacity	Max. Payload	31,5	1'112

20' GENERAL PURPOSE / DRY VAN



		Millimeters	Feet
Internal Dimensions	Length	12'022	39'5"
	Width	2'344	7'8"
	Height	2'347	7'8"
Door Opening	Width	2'336	7'8"
	Height	2'275	7'5"
Roof Opening	Width	11'515	37'9"
	Height	1'880	6'2"
		Kilograms	Lbs
Weight	Max. Payload	26'740	58'955
	Container-Tare	3'740	8'245
	Max. Gross Wt.	30'480	67'200
		Cube Metres	Cube Feet
Volume Capacity	Max. Payload	65,4	2'306

For large and/or high pieces that can not be loaded through container doors, such as machineries, marble, glass sheets, etc

Internal dimensions and weights are based on shipping line's and manufacturer's specifications. Tolerances must always be taken into account by shipper. Above mentioned details are to be considered as a guideline only.

Weight restrictions may be considered throughout the whole transport leg. National rules and regulations for road and rail transport, capacity limitations of cranes in seaport and inland-terminals as well as other factors may overrule the possible payload of a container.

For precise case-by-case information consult your local Freight Forwarder, Packaging Specialist or the specific shipping line you are going to book with.

East & West Express for International shipping

CONTAINER DETAILS: HIGH CUBE CONTAINERS

40' HIGH CUBE GENERAL PURPOSE / DRY VAN



Suitable for commodities in boxes, cartons, bundles, drums, smaller cases, furniture, pallets, etc.

		Millimeters	Feet
Internal Dimensions	Length	12'033	39'6"
	Width	2'350	7'8"
	Height	2'695	8'10"
Door Opening	Width	2'340	7'8"
	Height	2'585	8'6"
		Kilograms	Lbs
Weight	Max. Payload	26'680	58'360
	Container-Tare	4'000	8'850
	Max. Gross Wt.	30'480	67'200
		Cube Metres	Cube Feet
Volume Capacity	Max. Payload	76,2	2'690

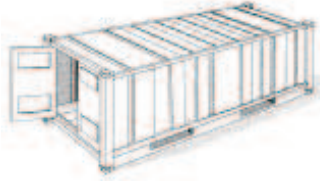
Internal dimensions and weights are based on shipping line's and manufacturer's specifications. Tolerances must always be taken into account by shipper. Above mentioned details are to be considered as a guideline only.

Weight restrictions may be considered throughout the whole transport leg. National rules and regulations for road and rail transport, capacity limitations of cranes in seaport and inland-terminals as well as other factors may overrule the possible payload of a container.

For precise case-by-case information consult your local Freight Forwarder, Packaging Specialist or the specific shipping line you are going to book with

East & West Express for International shipping

CONTAINER SPECIFICATION: FLAT RACK COLLAPSIBLE CONTAINERS



REEFER 20'

Inside Length	Inside Width	Inside Height	Door Width	Door Height	Capacity	Tare Weight	Maxi Cargo
17'8"	7'5"	7'5"	7'5"	7'3"	1,000 Cft	7,040 Lbs	45,760 Lbs
5.425 m	2.275 m	2.260 m	2.258 m	2.216 m	28.3 Cu.m	3,200 Kgs	20,800 Kgs

REEFER 40'

Inside Length	Inside Width	Inside Height	Door Width	Door Height	Capacity	Tare Weight	Maxi Cargo
37'8"	7'5"	7'2"	7'5"	7'0"	2,040 Cft	10,780 Lbs	56,276 Lbs
11.493 m	2.270 m	2.197 m	2.282 m	2.155 m	57.8 Cu.m	4,900 Kgs	25,580 Kgs

REEFER 40' HIGH CUBE

Inside Length	Inside Width	Inside Height	Door Width	Door Height	Capacity	Tare Weight	Maxi Cargo
37'11"	7'6"	8'2"	7'6"	8'0"	2,344 Cft	9,900 Lbs	57,561 Lbs
11.557 m	2.294 m	2.500 m	2.294 m	2.440 m	66.6 Cu.m	4,500 Kgs	25,980 Kgs

East & West Express for International shipping

CONTAINER SPECIFICATION: FLAT RACK CONTAINERS



FLAT RACK 20'

Inside Length	Inside Width	Inside Height	Door Width	Door Height	Capacity	Tare Weight	Maxi Cargo
18'5"	7'3"	7'4"	-	-	-	5,578 Lbs	47,333 Lbs
5.620 m	2.200 m	2.233 m	-	-	-	2,530 Kgs	21,470 Kgs

FLAT RACK 40'

Inside Length	Inside Width	Inside Height	Door Width	Door Height	Capacity	Tare Weight	Maxi Cargo
39'7"	6'10"	7'2"	-	-	-	12,081 Lbs	85,800 Lbs
12.080 m	2.270 m	2.103 m	-	-	-	5,480 Kgs	39,000 Kgs

East & West Express for International shipping

CONTAINER SPECIFICATION: FLAT RACK COLLAPSIBLE CONTAINERS



FLAT RACK COLLAPSIBLE 20'

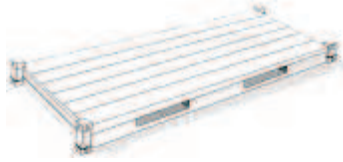
Inside Length	Inside Width	Inside Height	Door Width	Door Height	Capacity	Tare Weight	Maxi Cargo
18'5"	7'3"	7'4"	-	-	-	6,061 Lbs	61,117 Lbs
5.618 m	2.208 m	2.233 m	-	-	-	2,750 Kgs	27,730 Kgs

FLAT RACK COLLAPSIBLE 40'

Inside Length	Inside Width	Inside Height	Door Width	Door Height	Capacity	Tare Weight	Maxi Cargo
39'7"	6'10"	6'5"	-	-	-	12,787 Lbs	85,800 Lbs
12.080 m	2.270 m	2.043 m	-	-	-	5,800 Kgs	39,000 Kgs

East & West Express for International shipping

CONTAINER SPECIFICATION: PLATFORM CONTAINERS



PLATFORM 20'

Inside Length	Inside Width	Inside Height	Door Width	Door Height	Capacity	Tare Weight	Maxi Cargo
19'11"	8'0"	7'4"	-	-	-	6,061 Lbs	52,896 Lbs
6.058 m	2.438 m	2.233 m	-	-	-	2,750 Kgs	24,000 Kgs

PLATFORM 40'

Inside Length	Inside Width	Inside Height	Door Width	Door Height	Capacity	Tare Weight	Maxi Cargo
40'00"	8'0"	6'5"	-	-	-	12,783 Lbs	86,397 Lbs
12.18 m	2.40 m	1.95 m	-	-	-	5,800 Kgs	39,200 Kgs

East & West Express for International shipping

Contact Us

It is our goal to be the global additives company most admired for its people, partnership and performance. For answers to your questions regarding [ewexpress](#) or our Services, or for information on how we can help you satisfy a specific service application, please contact us using blow e-mails or our Tel.

East & West Express for International shipping

If you want to contact us for any questions, suggestions or Cooperation, then please do not hesitate to contact us.



Head Office

Mailing address & Tel.

23 July St., Mecca Jewelry Bldg.,
1st Floor, Apt# (1).
P.O. Box 58 Dumyat,
Zip Code: 34511
Damietta City, Egypt.

Phone: +20 57 226 2309
FAX: +20 57 228 1513
Mobile: +20 16 688 9016

CORPORATE EMAIL: info@ewexpress.com

COMMERCIAL DIRECTOR: m.okasha@ewexpress.com

EXPORT DEPT: export@ewexpress.com

ACCOUNT DEPT: accounts@ewexpress.com

For Sokhna Port Inquiries Contact : sokhna@ewexpress.com

Design & Development
by www.mwmworld.com

info@mwmworld.com

w@mwmworld.com

0020 16 463 0545

0020 10 091 6744

